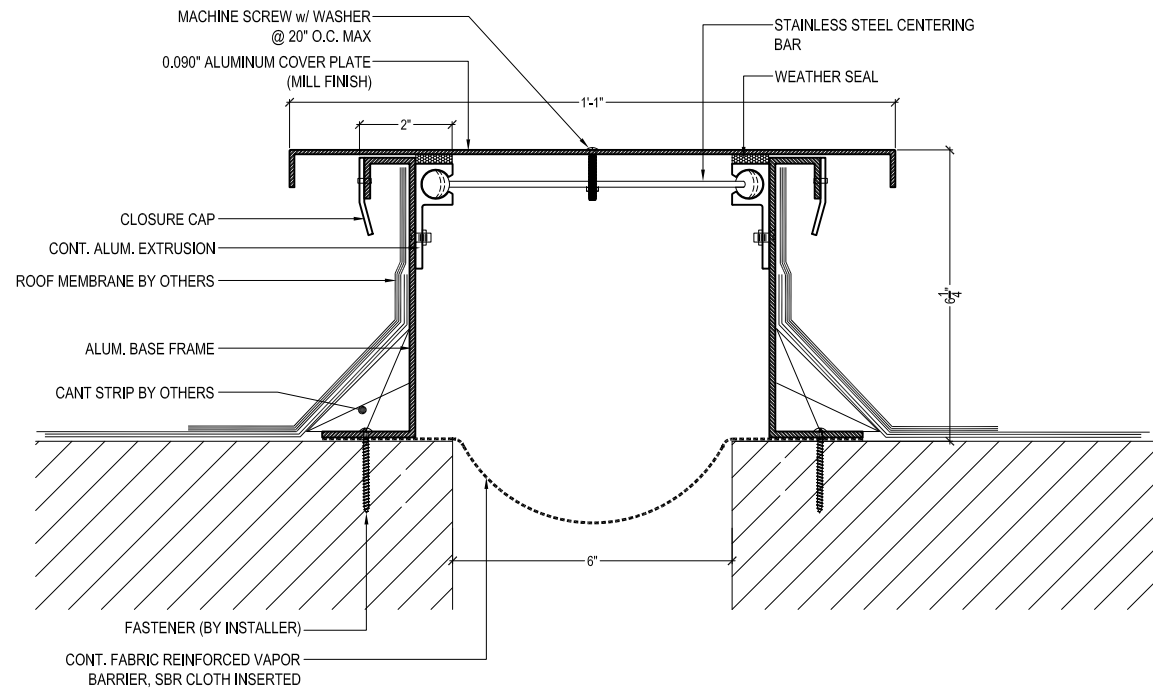


MODEL	A - VOID	MAX. OPENING	B - COVER
CRR - 2	2" (50.80)	4" (101.60)	8" (203.20)
CRR - 3	3" (76.20)	4 1/2" (114.30)	8 1/2" (215.90)
CRR - 3-3	3" (76.20)	6" (152.40)	10" (254.00)
CRR - 4	4" (101.60)	6" (152.40)	10" (254.00)
CRR - 4-4	4" (101.60)	8" (203.20)	12" (304.60)
CRR - 5	5" (127.00)	7 1/2" (190.50)	11 1/2" (292.10)
CRR - 5-5	5" (127.00)	10" (254.00)	14" (355.60)
* CRR - 6	6" (152.40)	9" (228.60)	13" (330.20)
CRR - 6-6	6" (152.40)	12" (304.80)	16" (406.40)
CRR - 7	7" (177.80)	10 1/2" (266.70)	14 1/2" (368.30)
CRR - 7-7	7" (177.80)	14" (355.60)	18" (457.20)
CRR - 8	8" (203.20)	12" (304.80)	16" (406.40)
CRR - 8-8	8" (203.20)	16" (406.40)	20" (508.00)
CRR - 9	9" (228.60)	13 1/2" (342.90)	17 1/2" (431.60)
CRR - 9-9	9" (228.60)	18" (457.20)	22" (558.80)
CRR - 10	10" (254.00)	15" (381.00)	19" (482.60)



## M.H. POWELL & CO., INC.

ARCHITECTURAL SEISMIC EXPANSION JOINT SYSTEMS

2313 YATES AVENUE | PHONE : (323) 887-0037  
 COMMERCE, CA 90040 | FAX : (323) 887-0877  
 | WEB : www.mhpowell.net

### MODEL CRR-6

ROOF TO ROOF

PROJECT : \_\_\_\_\_ PROJECT # : \_\_\_\_\_  
 LOCATION : \_\_\_\_\_ DATE : \_\_\_\_\_  
 ARCHITECT : \_\_\_\_\_  
 CUSTOMER : \_\_\_\_\_

PAGE #